

LEASEHOLD - SHARE OF  
FREEHOLD



Flat - Ground Floor

# FLAT 38, LIME TREE PARK BLAGDENS LANE, LONDON, N14 6DG

Offers Over

# £600,000

## FEATURES

- Chain Free
- Private Patio leading directly on to mature Communal Gardens
- 1146 sq ft apartment with 26' Reception Room
- Luxury Ground Floor apartment
- Two Double Bedrooms and Two Bathrooms
- Allocated Parking Space



# RASH & RASH

# 2 Bedroom Flat - Ground Floor located in London

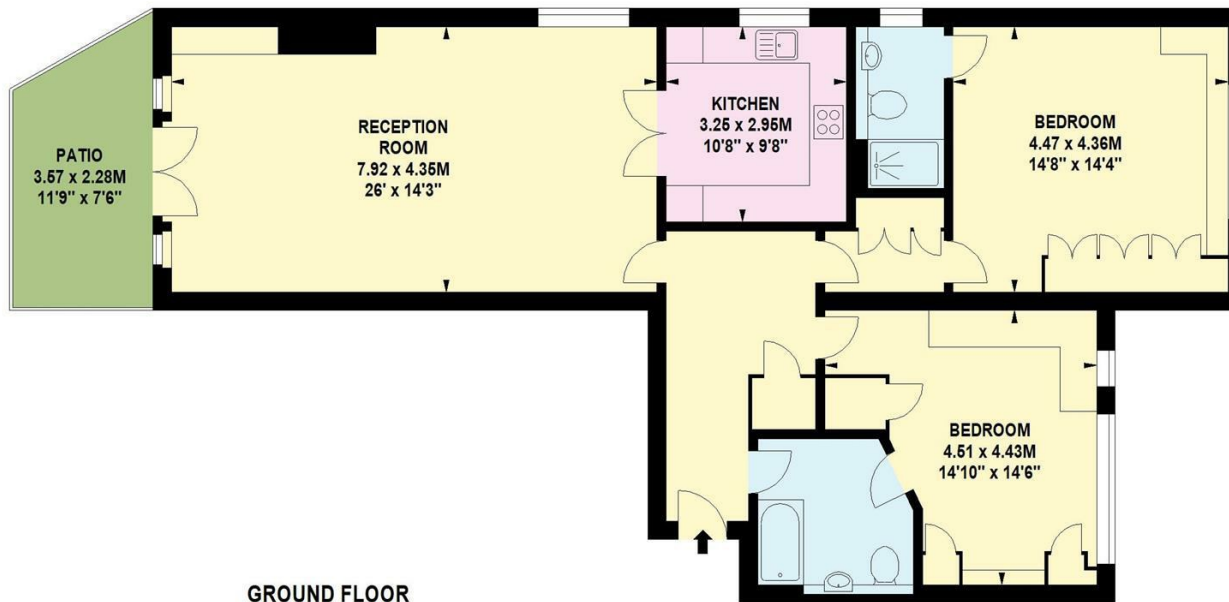
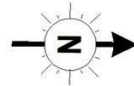
Set within the exclusive and beautiful development, this exceptional ground floor residence offers 1,164 sq ft of elegant, thoughtfully designed living space in one of Southgate's most desirable addresses.

Tucked away in a peaceful, private setting, yet just moments from Southgate Underground Station (Piccadilly Line), outstanding local amenities, and within the highly prized Ashmole School catchment, this superb apartment blends convenience with understated luxury.

The heart of the apartment is an impressive 26ft reception and dining room, a wonderfully expansive space perfect for both relaxed everyday living and stylish entertaining with double doors opening directly onto a private south facing patio. From here, enjoy seamless access to beautifully landscaped, mature communal gardens, creating a rare sense of tranquillity and greenery.

The property features two generously proportioned double bedrooms, including a principal bedroom with en-suite shower room, alongside a beautifully appointed family bathroom. A sleek contemporary kitchen is fitted with integrated appliances and finished to a high standard, complementing the home's refined feel throughout.

LIME TREE PARK,  
BLAGDENS LANE, N14  
Approx. Gross Internal Area  
1164 Sq Ft - 108.14 Sq M



Call us on  
**02088822828**

[info@rashandrash.com](mailto:info@rashandrash.com)  
<https://www.rashandrash.com/>

**Council Tax Band**

**E**

Energy Efficiency Rating		Current	Potential
<i>Very energy efficient - lower running costs</i>			
(92 plus)	A		
(81-91)	B		
(69-80)	C	78	82
(55-68)	D		
(39-54)	E		
(21-38)	F		
(1-20)	G		
<i>Not energy efficient - higher running costs</i>			
<b>England &amp; Wales</b>		EU Directive 2002/91/EC	

Agents Note: Whilst every care has been taken to prepare these particulars, they are for guidance purposes only. All measurements are approximate and are for general guidance purposes only and whilst every care has been taken to ensure their accuracy, they should not be relied upon and potential buyers are advised to recheck the measurements.

**RASH & RASH**